

AXOR Montreux
Semi-Pro Kitchen Faucet 2-Spray, 1.75 GPM
 Finishes : **chrome** Part no. : **16582001**



Description

Features

- Swivel range 360°
- Laminar and needle spray
- Toggle spray diverter
- Single-hole installation
- Flow: 1.75 GPM (6.6 L/Min)
- Ceramic cartridge
- 3/8" connections
- Integrated double backflow prevention

Item details

List Price \$ 1,121.00

Technology



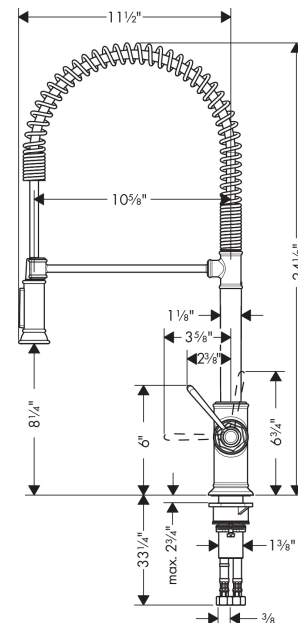
Compliance



Product image



Scale drawing

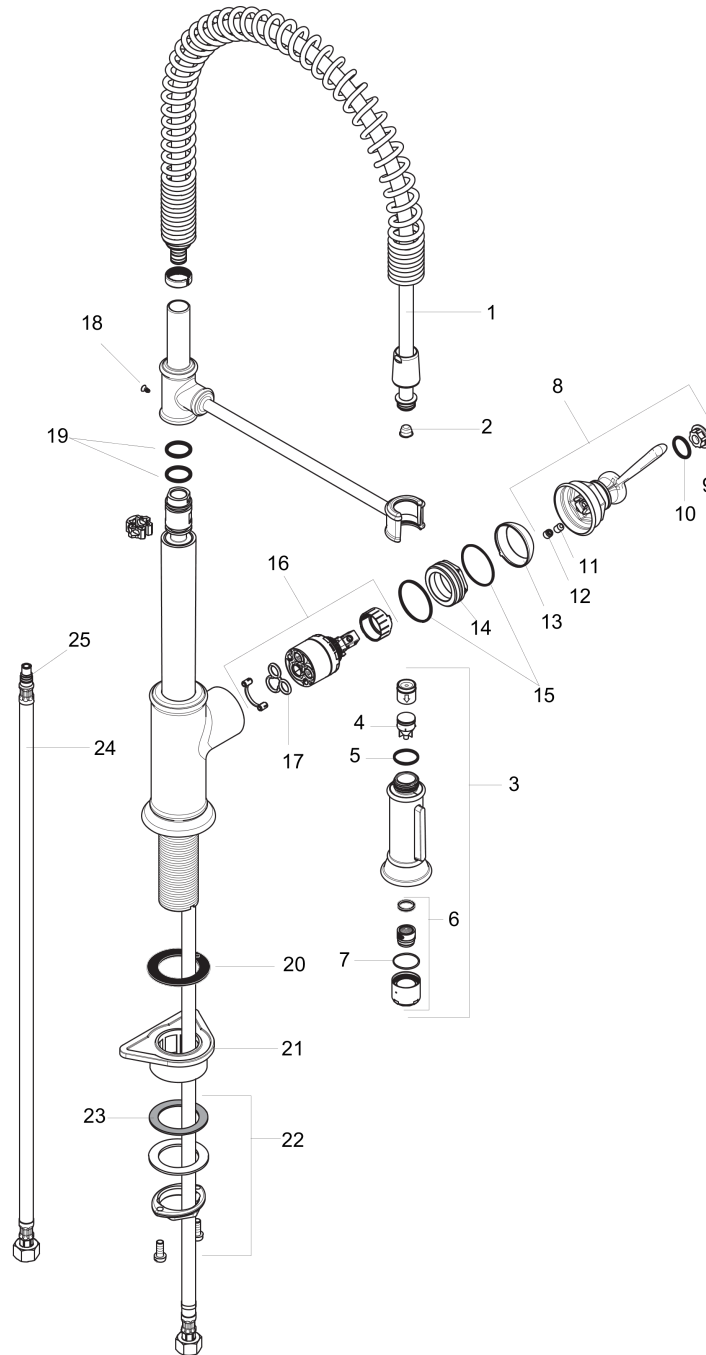


AXOR Montreux
Semi-Pro Kitchen Faucet 2-Spray, 1.75 GPM
 Finishes : **chrome** Part no. : **16582001**



Exploded drawing

Year of production: >01/18



AXOR Montreux
Semi-Pro Kitchen Faucet 2-Spray, 1.75 GPM
 Finishes : **chrome** Part no. : **16582001**



Spare parts list

Year of production: >01/18

Pos.	Description	Part no.	Price	PU
1	shower hose	97475000	-	1
2	filter	97735000	-	1
3	handspray	92967001	-	1
4	set of non return valves DW 15	97350000	-	1
5	O-ring 18x1,5	98231000	-	1
6	aerator laminar M22x1 (15 l/min)	95909000	-	1
7	O-ring 20x1	98140000	-	1
8	handle	92963000	-	1
9	cover cap	92964000	-	1
10	O-ring 16x2	98133000	-	1
11	hollow set screw M6x8	98444000	-	1
12	screw cover	96762000	-	1
13	flange	92965000	-	1
14	nut	92966000	-	1
15	O-ring 33x1,5	98164000	-	1
16	cartridge, assy	92730000	-	1
17	seal	95008000	-	1
18	screw	97662000	-	1
19	O-ring 17x2,5	98387000	-	1
20	sealing washer	97825000	-	1
21	support	97523000	-	1
22	fixing set (Ø 34)	95049000	-	1
23	lever collar	97548000	-	1
24	connection hose 35½" M8x0,75 3/8"	96316001	-	1
25	O-ring 7x1,5	98422000	-	1
a	non return valve	93218000	-	1