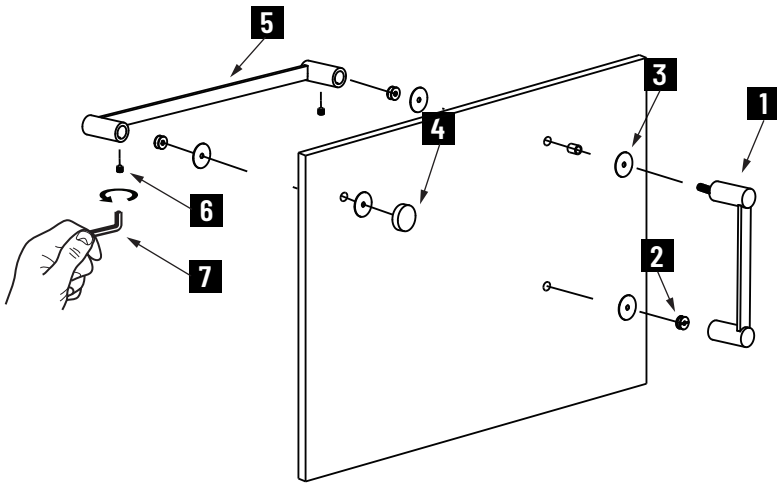


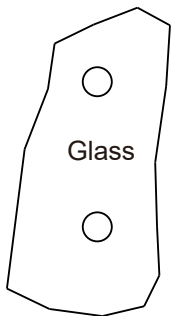
PORTO COLLECTION OFFSET SHOWER DOOR HANDLE

13770618/70624/70818/70824/
71218/71224

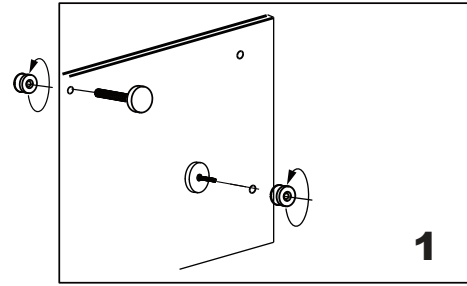


1. Vertical Handle
2. Fixing Bracket x 3
3. Clear Gasket x 4
4. End Cap x 2
5. Horizontal Handle
6. Set Screw M5 x 2
7. Allen Key 2.5mm x 1

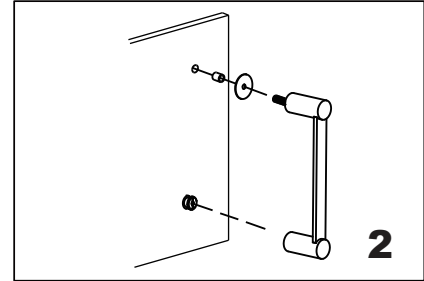
GLASS INFO



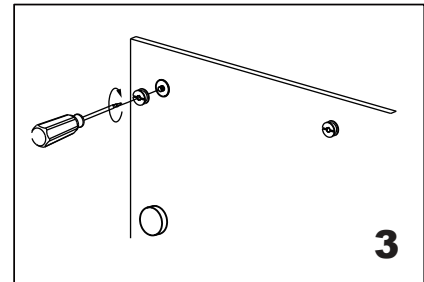
Glass Hole C-C Distance	
A	6"/152mm 6" Shower Door Handle
	8"/203mm 8" Shower Door Handle
	12"/305mm 12" Shower Door Handle
	18"/457mm 18" Shower Door Handle
	24"/610mm 24" Shower Door Handle
B	1/2"(12mm) Glass Hole Diameter
C	6-12mm Glass Thickness



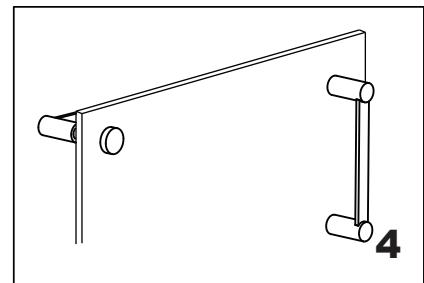
Separate the Vertical handle & Horizontal handle, two end caps & handles by loosening the set screw. Fix the 2 end caps onto glass and tighten them with fixing brackets.



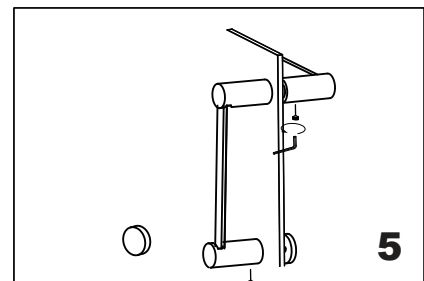
Install the Vertical handle (bolt) through the glass holes, fix the other post onto the bracket. Make sure the clear gaskets are between handle & glass.



Screw in the fixing brackets into the Vertical handle bolt, tighten the brackets by screwdriver.



Install the horizontal handle onto the brackets.



Fix the set screws on the end caps, tighten it to avoid loose from fixing brackets.